

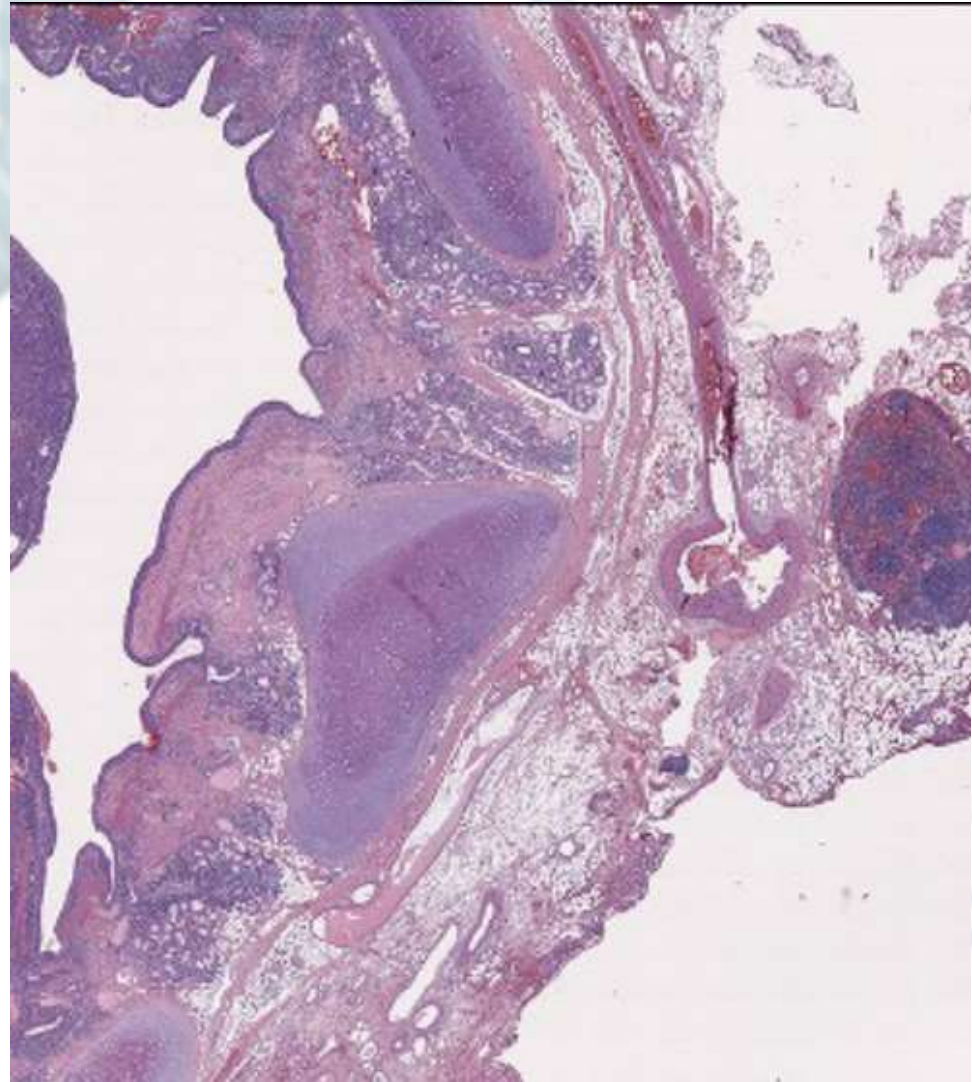


A CURA DI

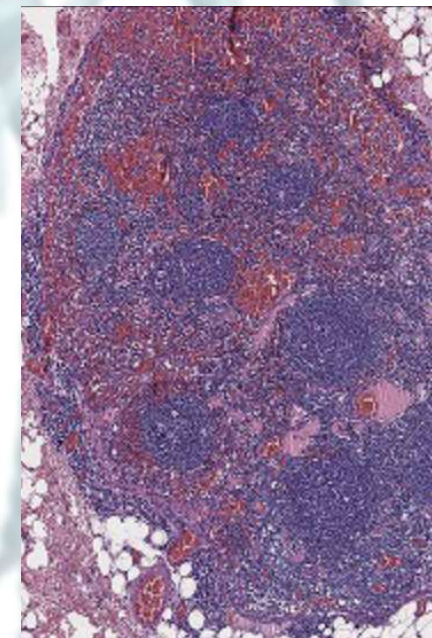
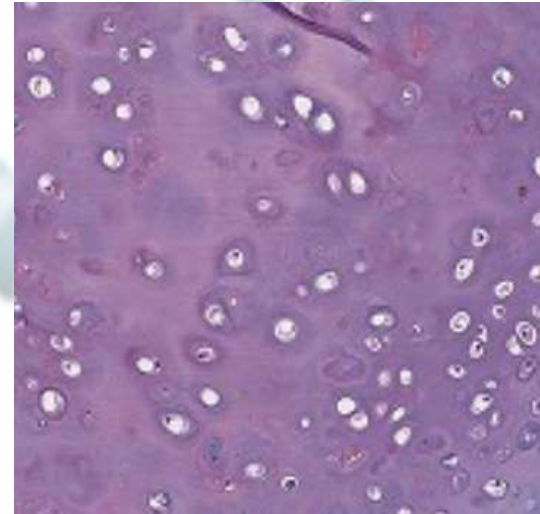
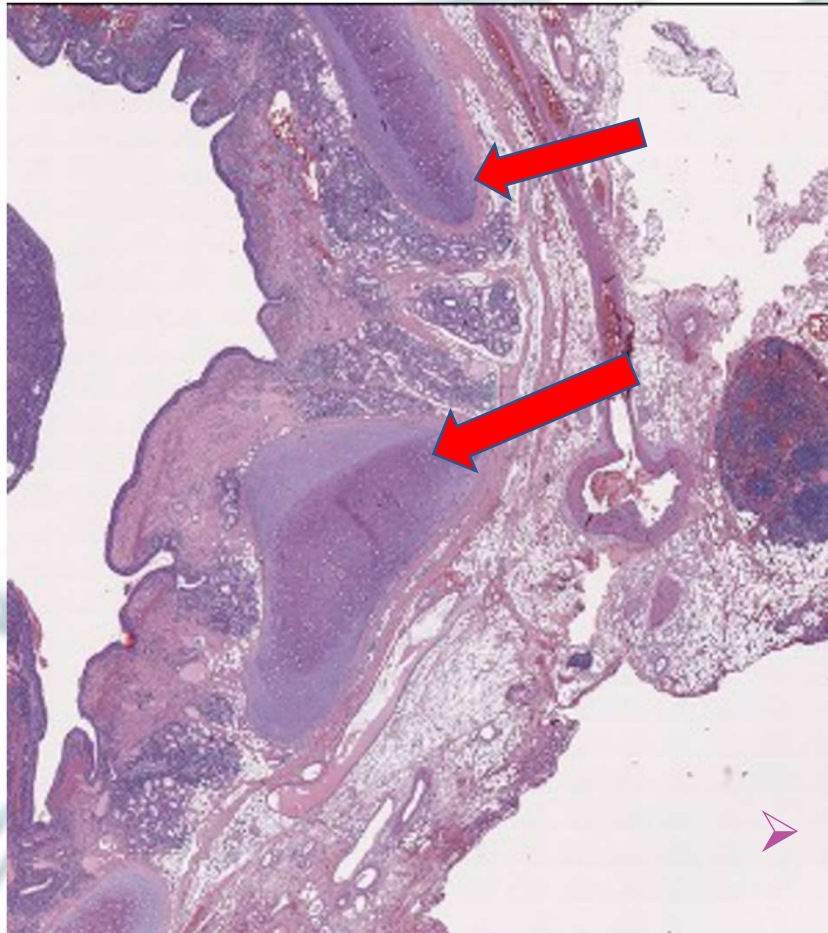
KHRYSTYNA
RYABENKO

BRONCO

ANATOMIA MICROSCOPICA



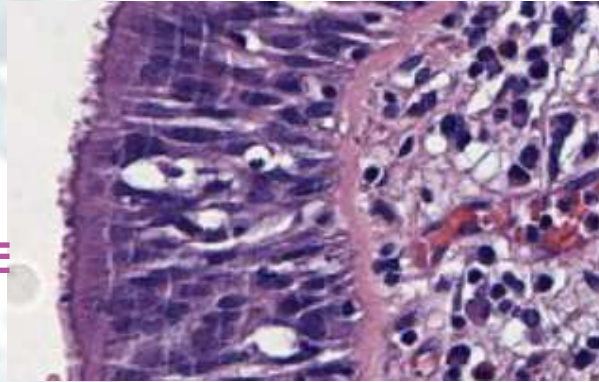
➤ CARTILAGINE IALINA



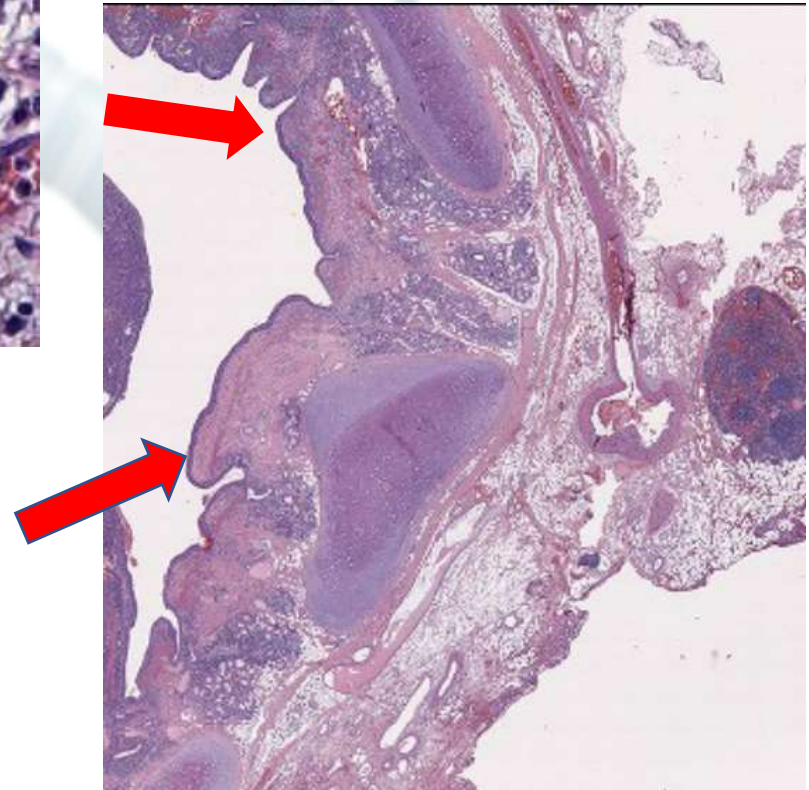
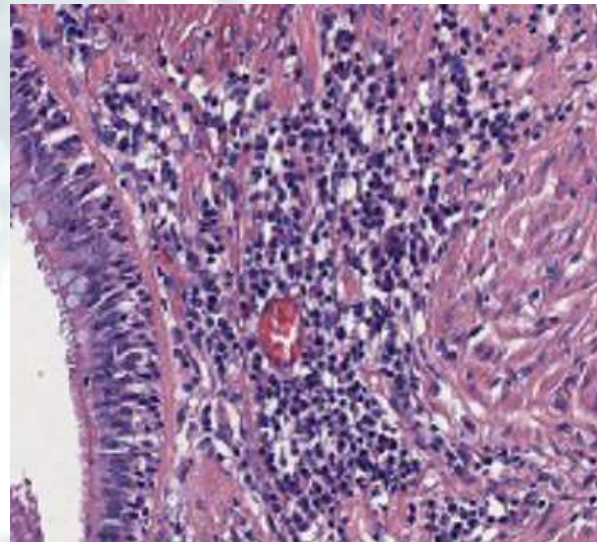
➤ LINFONODO

➤TONACA MUCOSA

- EPITELIO DI RIVESTIMENTO CILINDRICO PLURISERIATO CON CIGLIA, CELLULE CALICIFORMI E MICROVILLI

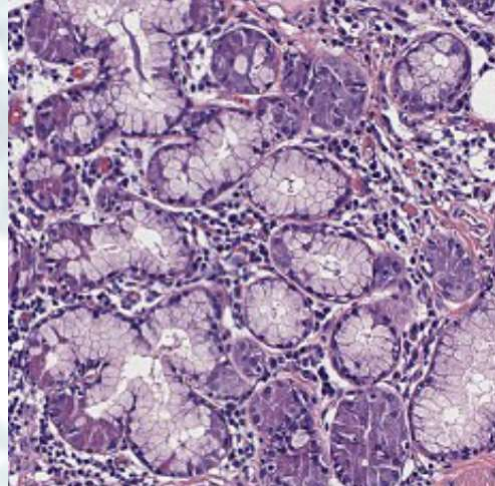


- LAMINA PROPRIA CON FIBRE ELASTICHE E NODULI LINFATICI

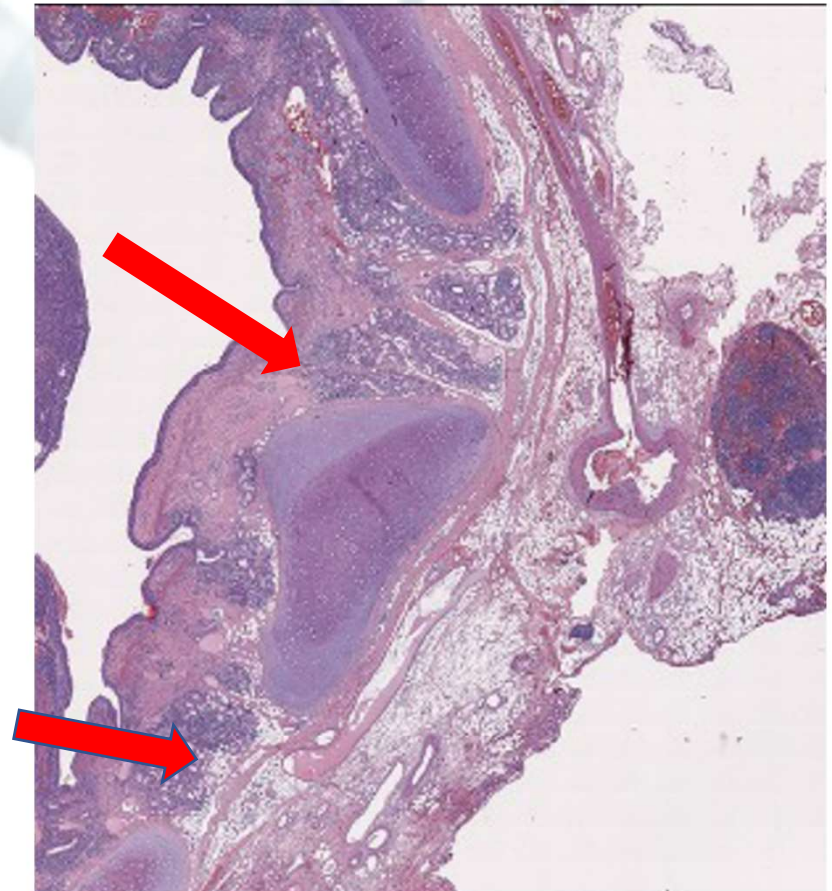
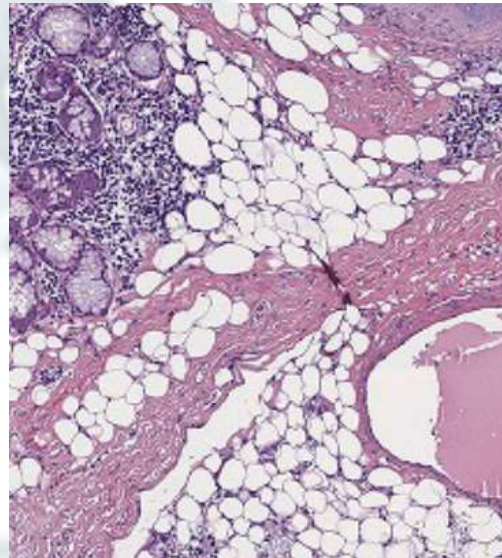


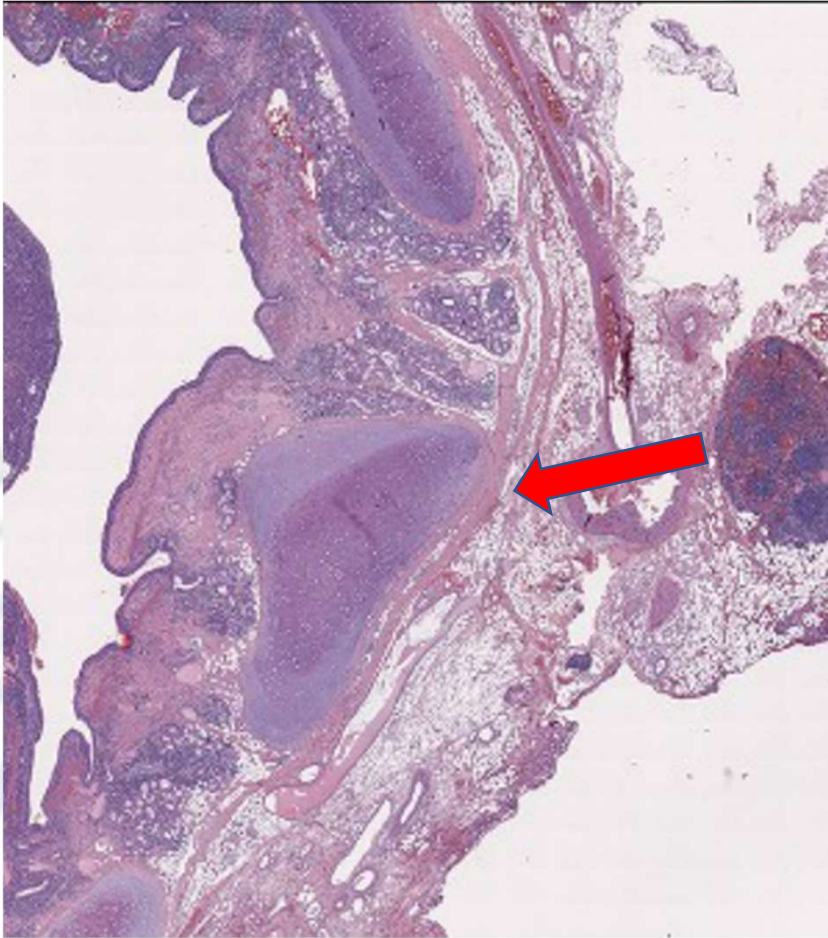
➤ TONACA SOTTOMUCOSA

- GHIANDOLE TUBULOACINOSE COMPOSTE A SECREZIONE MUCOSA, SIEROSA E MISTA

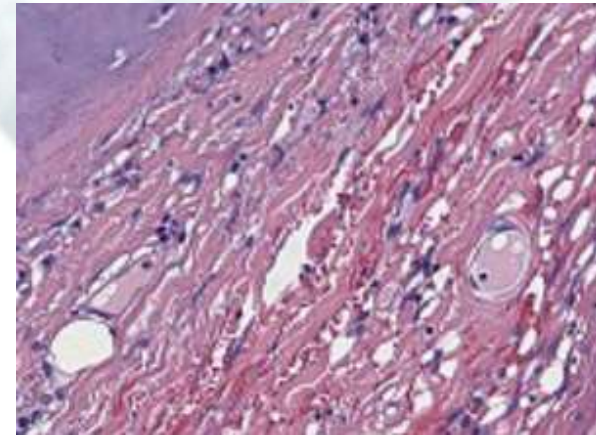


- LOBULI ADIPOSИ





➤ TONACA FIBROSA



- CONNETTIVO DENSO CHE CIRCONDA GLI ANELLI CARTILAGINEI RICCO DI FIBRE ELASTICHE